

SILHOUETTE 25” SINGLE BOWL KITCHEN SINK

- Americast brand engineered material
- Single bowl design
- Self-rimming or undercounter installation
- 3-1/2" stainless steel strainer supplied
- Silicone sealant supplied
- Faucet deck
- Available in 1, 3, or 4 faucet hole configuration (Faucet shown not included)

Self-Rimming:

- 7172 001C** Centre hole only
- 7172 803C** 3 hole
- 7172 804C** 4 hole

Undercounter Installation:

- 791326-100** Mounting Kit (consists of cut-out templates and mounting kits)

NOTE: For undercounter installation order self-rimming model with desired hole punchings along with 791326-100 Mounting Kit. Cutting board 9000 250 cannot be used with undercounter mount.

Nominal Dimensions: 635 x 559 x 241mm (25" x 22" x 9-1/2")

Bowl sizes:

552mm (21-3/4") wide, 476mm (18-3/4") front to back 229mm (9") deep



NOTE: Roughing-in information shown on reverse side of page.

To Be Specified

- Colour:
- Faucet* and Finish:
- Soap Dispenser and Finish: 4503 115:
- Trap 1-1/2" (38mm):

See Pgs. KIT-011 & 012 for information on the following items:

- Coated Wire Utility Basket: 7346 100:
- Wood Cutting Board: 9000 250:
- Colander for Cutting Board: 8102 100:
- Large Colander: 8103 100:
- Bottom Sink Rack (left hand bowl): 7404 100:

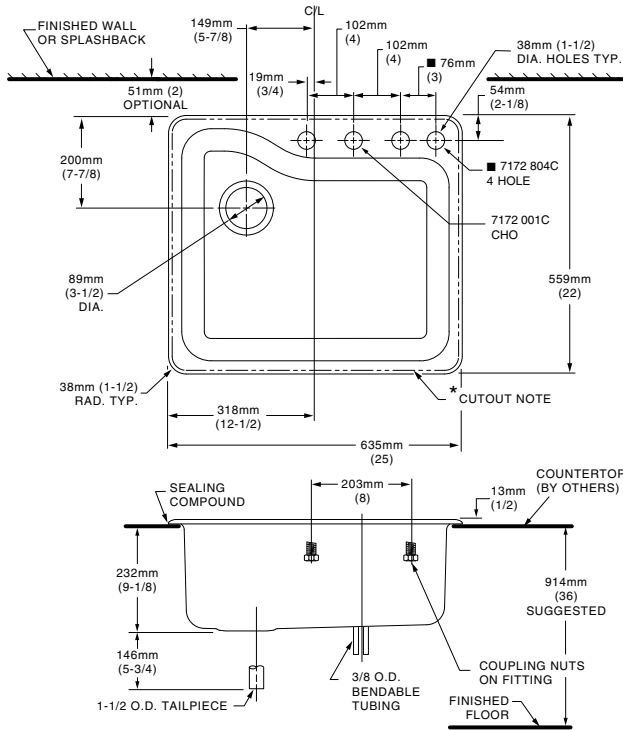
* See faucet section for additional models available

Compliance Certifications -

Meets or Exceeds the Following Specifications:

- ASME A112.19.4M for Americast Plumbing Fixtures
- ASTM E162 for Flammability
- NFPA 258 for Smoke Density
- CAN/CSA B45 series

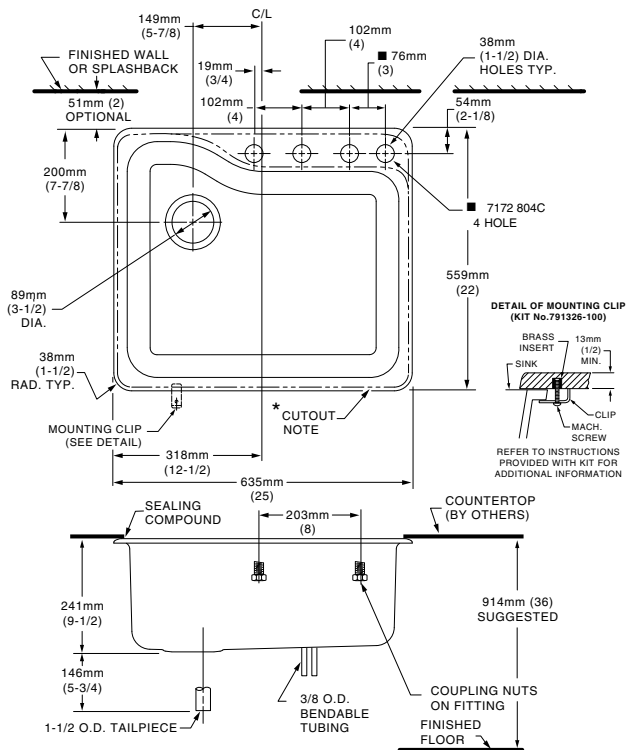
7172 001C/803C/804C



NOTES:

- * **SELF-RIMMING (7172 001C/803C/4C):**
COUNTERTOP CUTOUT 603 X 527MM WITH 25MM RADIUS (23-3/4 X 20-3/4 WITH 1" RAD.) AT CORNERS.
- **ON FOUR HOLE VERSIONS, SPACING BETWEEN FAR RIGHT HOLES IS 3".**
FAUCETS NOT INCLUDED AND MUST BE ORDERED SEPARATELY.
PROVIDE SUITABLE REINFORCEMENT FOR ALL WALL AND COUNTERTOP SUPPORTS.
- IMPORTANT: Dimensions of fixtures are nominal and may vary within the range of tolerances established by ANSI Standard A112.19.4
These measurements are subject to change or cancellation. No responsibility is assumed for use of superseded or voided leaflet.

Undercounter Mount



NOTES:

- * **TEMPLATE PROVIDED WITH MOUNTING KIT 791326-100 FOR EXPOSED FAUCET DECK OR UNDERCOUNTER FAUCET DECK COUNTERTOP CUTOUT VARIATIONS.**
- **ON FOUR HOLE VERSIONS, SPACING BETWEEN FAR RIGHT HOLES IS 3".**
FAUCETS AND UNDERCOUNTER MOUNTING KIT NOT INCLUDED AND MUST BE ORDERED SEPARATELY.
PROVIDE SUITABLE REINFORCEMENT FOR ALL WALL AND COUNTERTOP SUPPORTS.